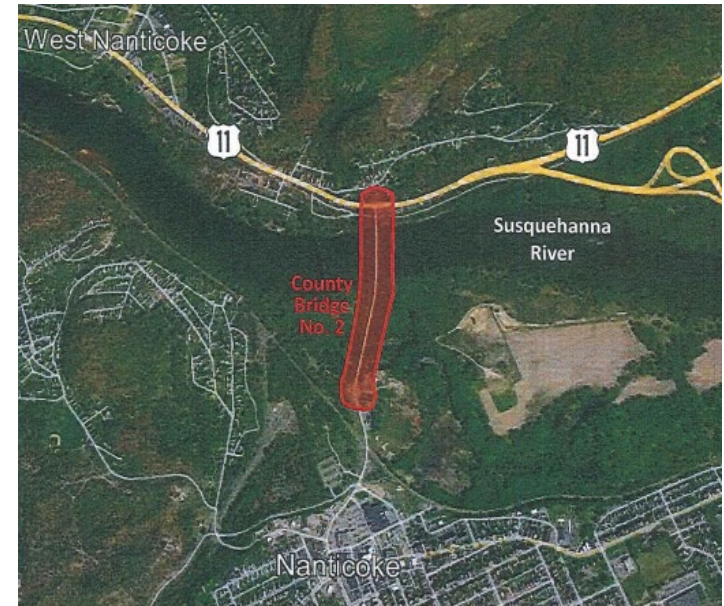


Nanticoke/West Nanticoke Bridge Fatigue Concerns

The Nanticoke/West Nanticoke Bridge needs structural work.



Fracture critical elements & fatigue concerns
Constructed in 1914
Weight posting already reduced to 15 tons
Inspection required every 6 months
AADT: 6,770



Nanticoke/West Nanticoke Bridge: Severe Corrosion





Impact on Emergency Services

- The bridge closure would increase Emergency Services response times by at least 3 minutes depending on weather and traffic, increasing costs and risking loss of life, health complications, or severe injury.
- The Nanticoke City Fire Department provides service to the greater West Nanticoke area of Plymouth Township and utilizes the Broadway Street Bridge to respond to more than 100 calls per year. The Nanticoke City Fire Department has a Rapid Intervention Team that responds all the way to the Columbia County border. Route 11 via the Broadway Street Bridge is the most expeditious way for the Nanticoke City Fire Department to reach these areas of Luzerne County.
- Newport Township responds when there is a two alarm fire emergency in Plymouth Township using the Broadway Street Bridge.
- Nanticoke Community Ambulance uses the Broadway Street Bridge at least once a day. In addition to the City of Nanticoke, they are the EMS provider for Plymouth Township, which is across the bridge.



Nanticoke/West Nanticoke Bridge: Deterioration

Community Impact

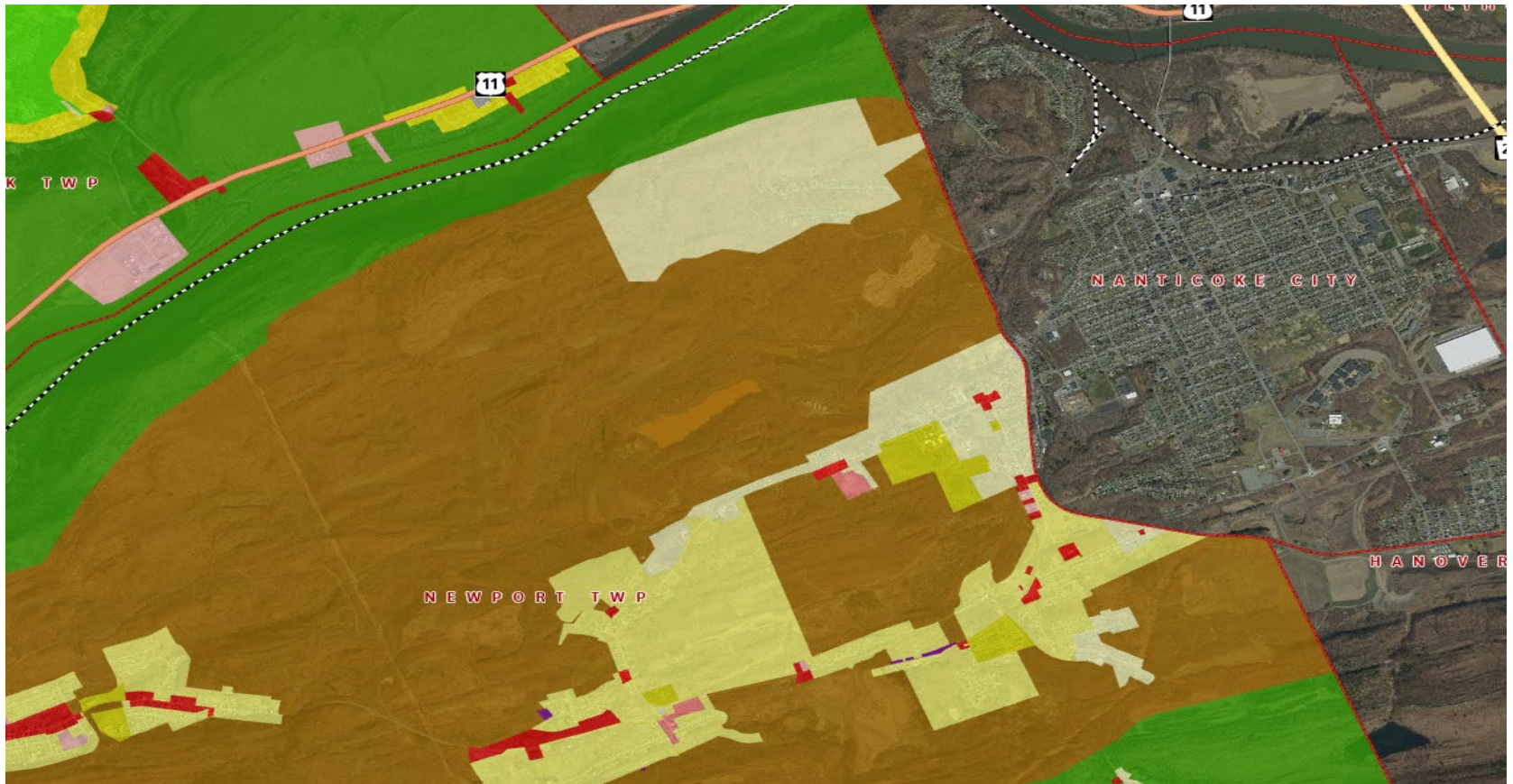
The bridge, which was built in 1914, is in poor condition. Approximately 6,369 vehicles cross the bridge each day and 500 of these are trucks. More than 10,100 residents and 4,478 households are within a five-minute drive of the bridge. There are also 291 businesses with 2,684 employees within a five-minute drive.





Impact on Local Businesses

There are 291 businesses located within five minutes of the Broadway Street Bridge including 48 retail establishments, 27 eating and drinking places, 20 healthcare and social assistance providers, and 62 service businesses. In the area immediately surrounding the bridge (within 1 mile), there are 91 businesses.



Impact on Future Growth

There are many areas in Newport Township that are zoned as mining (shown in brown). These could be developed in the future for our area's growth and opportunity.